

# WASHDOWN MOTORS AND DRIVES

## PRODUCT RANGE

REGISTERED  
DESIGN

MADE IN ITALY



Certification  
*Certificazione*

IP69k

CE

NSF

COMPONENT

c **RU** US

IE4

# CLEAN-GEARTECH

# Series AISI 304

## Full stainless steel gearboxes

Riduttori completamente in acciaio inox

### VFI Series

#### Stainless steel square worm gearboxes

Riduttori a vite senza fine quadrati completamente in acciaio inox



Ratios: 5 ÷ 102

Type

Tipo

Torque

Coppia

Input power

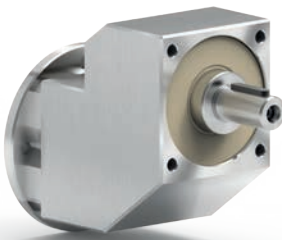
Potenza in entrata

Type	Torque	Input power
Tipo	Coppia	Potenza in entrata
I30	21 Nm	0.06 ÷ 0.18 kW
I45	41 Nm	0.12 ÷ 0.37 kW
I50	72 Nm	0.12 ÷ 0.75 kW
I63	147 Nm	0.37 ÷ 1.8 kW
I85	347 Nm	0.55 ÷ 4.0 kW
I11	651 Nm	1.1 ÷ 4.0 kW

### RCI Series

#### Stainless steel ratio multipliers

Riduttori ad uno stadio completamente in acciaio inox



Ratios: 1.57 ÷ 10.86

Type

Tipo

Torque

Coppia

Input power

Potenza in entrata

Type	Torque	Input power
Tipo	Coppia	Potenza in entrata
4111	38 Nm	0.37 ÷ 1.5 kW

# N Series AISI 316L

## Full stainless steel gearboxes

Riduttori completamente in acciaio inox

### VFN series Stainless steel round worm gearboxes

Riduttori a vite senza fine tondi completamente in acciaio inox

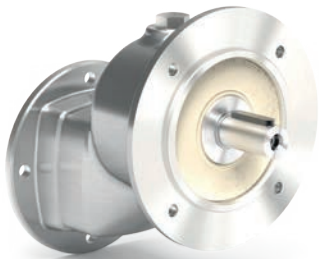


Ratios: 5 ÷ 102

Type <i>Tipo</i>	Torque <i>Coppia</i>	Input power <i>Potenza in entrata</i>
N30	21 Nm	0.06 ÷ 0.18 kW
N45	41 Nm	0.12 ÷ 0.37 kW
N50	72 Nm	0.12 ÷ 0.75 kW
N63	147 Nm	0.37 ÷ 1.8 kW
N85	347 Nm	0.55 ÷ 4.0 kW

### RCN Series Stainless steel ratio multipliers

Riduttori ad uno stadio completamente in acciaio inox

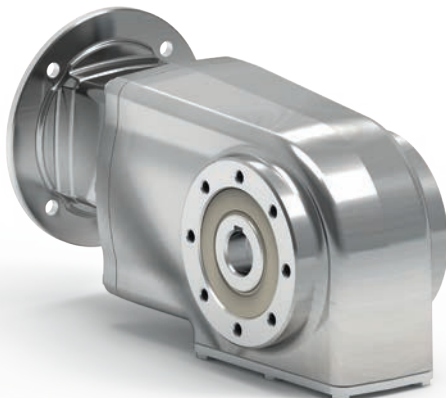


Ratios: 1.57 ÷ 10.86

Type <i>Tipo</i>	Torque <i>Coppia</i>	Input power <i>Potenza in entrata</i>
211N	20 Nm	0.25 ÷ 0.37 kW
411N	38 Nm	0.37 ÷ 1.5 kW

### BVN Series Stainless steel helical bevel gearboxes

Riduttori a coppia conica completamente in acciaio inox



Ratios: 6.03 ÷ 678.79

Type <i>Tipo</i>	Torque <i>Coppia</i>	Input power <i>Potenza in entrata</i>
X42N	130 Nm	0.25 ÷ 1.5 kW
X43N	136 Nm	0.12 ÷ 0.37 kW
X62N	410 Nm	0.75 ÷ 4.0 kW
X63N	410 Nm	0.25 ÷ 1.1 kW
X73N	675 Nm	1.1 ÷ 4.0 kW
X74N	675 Nm	0.25 ÷ 1.5 kW

# D Series ALUMINUM

## Aluminum gearboxes

Riduttori in alluminio

**VFD Series** Smooth surface aluminum worm gearboxes  
Riduttori a vite senza fine in alluminio con superficie liscia



Ratios: 5 ÷ 102

Type <i>Tipo</i>	Torque <i>Coppia</i>	Input power <i>Potenza in entrata</i>
D30	21 Nm	0.06 ÷ 0.18 kW
D45	41 Nm	0.09 ÷ 0.37 kW
D50	72 Nm	0.12 ÷ 0.75 kW
D63	147 Nm	0.37 ÷ 1.8 kW
D85	347 Nm	0.55 ÷ 4.0 kW

**RCD Series** Smooth surface aluminum ratio multiplier  
Riduttori ad uno stadio in alluminio con superficie liscia



Ratios: 2.05 ÷ 9.83

Type <i>Tipo</i>	Torque <i>Coppia</i>	Input power <i>Potenza in entrata</i>
211D	20 Nm	0.37 ÷ 1.5 kW

# Stainless steel and Aluminum premium motors

Motori elettrici in acciaio inox e alluminio

## SPM Series Stainless steel premium electric motors

Motori elettrici in acciaio inox



**Standard** terminal box with cable gland in **axial** position



IEC Three phase 230/400V 50Hz  
TENV (totally enclosed non ventilated)  
TEFC (totally enclosed fan cooled) IEC only 2.2 kW 4P and 3 kW 2P.  
IEC Trifase 230/400V 50Hz  
TENV (totalmente chiuso non ventilato)  
TEFC (totalmente chiuso ventilato) IEC solo 2.2 kW 4P e 3kW 6P.

Standard terminal box with cable gland in axial position.  
On request terminal box with cable gland in radial position.

Standard morsetti con pressacavo in posizione assiale.  
A richiesta morsetti con pressacavo in posizione radiale.

<b>IEC Sizes</b>	63, 71, 80, 90, 100
Taglie IEC	
<b>Power</b>	0.12 ÷ 3.0 kW
Potenza	
<b>Mounting</b>	B14, B5, B3 and Nema
Montaggio	
<b>Poles</b>	2, 4, 6
Poli	

## APM Series Aluminum premium electric motors

Motori elettrici in alluminio



**Standard** terminal box with cable gland in **radial** position



IEC Three phase 230/400V 50Hz  
TENV (totally enclosed non ventilated)  
IEC Trifase 230/400V 50 Hz  
TENV (totalmente chiuso non ventilato)

Standard terminal box with cable gland in radial position.  
On request cable UL certified resistant to hot temperature (+90°C).

Standard morsetti con pressacavo in posizione radiale.  
A richiesta cavo certificato UL resistente alla alte temperature (+90°C).

<b>IEC Sizes</b>	63, 71, 80, 90
Taglie IEC	
<b>Power</b>	0.12 ÷ 2.2 kW
Potenza	
<b>Mounting</b>	B14 and Nema
Montaggio	
<b>Poles</b>	2, 4, 6
Poli	

For the complete documentation please visit our website: [www.cleangeartech.com](http://www.cleangeartech.com)

Per la documentazione completa si prega di visitare il nostro sito web: [www.cleangeartech.com](http://www.cleangeartech.com)







## CLEAN-GEARTECH

Via Cordellina, 81, 36077 Altavilla Vicentina VI - ITALY  
Tel. +39 0444 1240920 - Fax +39 0444 1240921  
info@cleangeartech.com - www.cleangeartech.com



2 - 4 - 6 poles B14 Always available  
Also Nema



An Italian product

Distributed from

 **OverveldTechniek**

Edisonweg 5  
4631SN Hoogerheide  
0164-611000  
technik@overveldtechnik.com  
www.overveldtechnik.com